

An INTRODUCTION to

\*  
SUMMIT PUBLIC SCHOOLS

RESEARCH &  
DEVELOPMENT





## **SUMMIT'S R&D MISSION:**

To identify and cultivate transformational opportunities and drive systematic improvement across Summit Learning schools in order to deliver on our vision to equip every student to lead a fulfilled life.



# TO MOVE TOWARD OUR TEAM MISSION, WE:



**IDENTIFY  
AND  
EXPLORE**

Identify and explore opportunities that move us closer to our vision of equipping all students to lead fulfilled lives.

**IMPROVE  
SUMMIT  
LEARNING**

Improve Summit Learning in collaboration with the Summit community, external research partners, and thought leaders across fields.

**IMPACT THE  
EDUCATION  
FIELD**

Impact the education field by sharing our research and engaging schools and communities in rigorous problem solving and systematic learning.

# RESEARCH AGENDA FOR THE 2017-18 SCHOOL YEAR

Summit R&D organizes its work between  
long-term and mid-term projects:

## LONG-TERM PROJECTS

**Long-Term Projects**  
focus on opportunity  
exploration and  
fulfillment of the Summit  
Learning vision — to  
equip every student to  
lead a fulfilled life.

## MID-TERM PROJECTS

**Mid-Term Projects**  
focus on continual  
improvement and  
evaluation of the Summit  
Learning Program.





# LONG-TERM PROJECTS

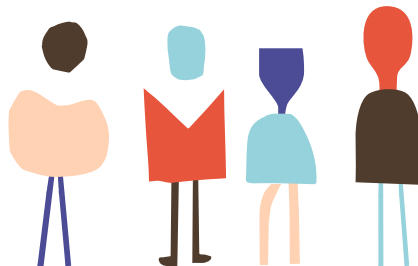
Opportunity exploration and vision fulfillment

SUMMIT  
LEARNING  
TEACHER  
RESIDENCY

In collaboration with the Stanford Center for Assessment, Learning, and Equity, this project focuses on developing and sustainably scaling a teacher credentialing program — through a one-year residency model — that brings a diverse cohort of educators into the profession and equips them to excel in personalized learning classrooms. The first cohort of residents began in August 2017.

SUMMIT  
LEARNING  
DIPLOMA

In collaboration with university admissions counselors, the Learning Policy Institute, the California Performance Assessments Collaborative (CPAC), the California College of the Arts, Dr. Brooke Stafford-Brizard, and Stanford University, this project focuses on building out a diploma-granting process for Summit Learning that ensures that students have met rigorous commencement-level outcomes, making the Summit Learning Diploma meaningful for colleges, employers, and students themselves.





# MID-TERM PROJECTS

Continual improvement and evaluation

## HABITS OF SUCCESS

In collaboration with leading researchers at SRI, the Chicago Consortium for School Research, and the Chan Zuckerberg Initiative, and with practitioners such as Valor Academy, this project focuses on implementing habits-building activities and exercises throughout the school day, as well as creating a more formal plan of action for embedding Habits of Success at every stage of a student's Summit Learning experience.

## COGNITIVE SKILLS

In collaboration with the Stanford Center for Assessment, Learning, and Equity (SCALE), this project seeks to increase the validity and reliability of Cognitive Skills scoring across Summit Learning classrooms, while examining best practices for helping students develop these skills through feedback, facilitated projects, and curriculum alignment.

## CONTENT KNOWLEDGE

In collaboration with learning scientists at Alder University and the Chan Zuckerberg Initiative, this project focuses on strengthening Summit's approach to helping students build and apply Content Knowledge in each discipline, resulting in comprehensive improvements to the curriculum.

## ENSURING ALL STUDENTS ARE ON GRADE LEVEL IN LITERACY & NUMERACY

In collaboration with the National Equity Project, Billions Institute, Carnegie Foundation for the Advancement of Teaching, leading math and literacy experts, and data scientists, this project coordinates a Networked Improvement Community (NIC) of educators and experts across the country to identify and implement ways to better support students who start the year out more than a grade level behind in literacy or numeracy.

## SUMMIT LEARNING ENVIRONMENT & OUTCOMES

In collaboration with FSG, this project focuses on better understanding the ways in which a Summit Learning environment (real-world projects, individualized pathways, 1:1 mentoring) helps students achieve key learning outcomes (Cognitive Skills, Content Knowledge, Habits of Success, Sense of Purpose), what contextual factors account for variation in this linkage, and how to make this linkage stronger and more consistent.

SUMMIT  
LEARNING  
PROGRAM  
SUPPORT

In collaboration with FSG, this project focuses on better understanding the key factors underlying schools' effectiveness after their first year of adopting Summit Learning, as well as key scaling decisions, in order to better provide targeted support.

SUMMIT  
LEARNING  
ALUMNI

In collaboration with ACT Research, this project focuses on better understanding the experiences of Summit Learning students after they leave high school, with a focus on fall college enrollment and persistence through the first and second years of college. We will use these lessons to improve supports for Summit Learning students and alumni.

FAMILY  
ENGAGEMENT

In collaboration with the Harvard Student Social Support R&D Lab and behavioral economist Todd Rogers, this project focuses on improving student outcomes and strengthening partnership with families by enabling supportive text messages and emails to Summit Learning families about their student's coursework and progress. The project builds off of several recent studies that show the high impact of such communications to families.

HIGHLIGHTING  
& SPREADING  
BEST  
PRACTICES

This project focuses on identifying best practices across the Summit Learning network and building systematic ways to capture, spread, and celebrate these practices. One form this process of best practice sharing and celebration will take is a formal Summit Learning Awards program.

EDUCATOR  
DEVELOPMENT  
& ENABLING  
CONDITIONS  
FOR SUMMIT  
LEARNING

In collaboration with the Center for Public Research and Leadership at Columbia University, Lindsay Unified School District, and Transcend Education, this project focuses on building out research-backed, actionable tools for educators and leaders to create and maintain effective personalized learning environments in their schools. Tools will include classroom-level look-fors and a site-level playbook.

# RESEARCH & DEVELOPMENT OVERVIEW

Summit Public Schools' R&D mission is to identify and cultivate transformational opportunities and drive systematic improvement across Summit Learning schools in order to deliver on our vision to equip every student to lead a fulfilled life.

## LONG-TERM PROJECTS

Summit Learning Teacher Residency

Summit Learning Diploma

## MID-TERM PROJECTS

Habits of Success

Cognitive Skills

Content Knowledge

Ensuring All Students  
are on Grade Level in  
Literacy & Numeracy

Summit Learning  
Environment & Outcomes

Summit Learning  
Program Support

Summit Learning Alumni

Family Engagement

Highlighting & Spreading  
Best Practices

Educator Development  
& Enabling Conditions  
for Summit Learning